



# NORMAQUICK® Spigots





## Secure connection for cooling water and heating hoses


- ✓ Time and cost reduction due to snap assembly without tool
- ✓ Application in extremely narrow spaces thanks to compact dimensions
- ✓ Suitable for NORMAQUICK® PS3


 Air Intake & Induction

 Exhaust Systems

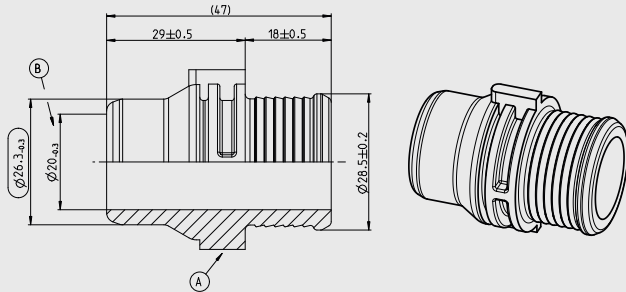
 Cooling Systems

 Fuel & Oil Systems

 Turbocharger Installations

 Fixing & Retaining

**NORMAQUICK® Spigots**



**Applications**

PS3 connectors with the corresponding Spigots are used for leak proof connection of cooling water lines or heating lines in passenger and commercial vehicles.

**Material**

Housing	PA66-GF30
Temperature Range	-40°-135°

Article number	Description	Number of Ports	Ø NW* (mm)	Quantity per packaging	For NORMAQUICK® PS3
0702 4010 012	Spigot PS3 NW12-0°	1	12	100	PS3 NW12 – 0° 0702 6009 012 PS3 NW12 – 90° 0702 6008 012
0702 4007 016	Spigot PS3 NW16-0°	1	16	100	PS3 NW16 – 0° 0702 7019 016 PS3 NW16 – 90° 0702 6020 016
0702 4005 020	Spigot PS3 NW20-0°	1	20	100	PS3 NW20 – 0° 0702 7003 020 PS3 NW20 – 90° 0702 7004 020
0702 6008 026	Spigot PS3 NW26-0°	1	26	100	PS3 NW26 – 0° 0702 6007 026 PS3 NW26 – 90° 0702 7011 026
0702 4088 032	Spigot PS3 NW32-0°	1	32	50	PS3 NW32 – 0° 0702 7018 032 PS3 NW32 – 90° 0702 7042 032

\* NW (Nominal Width): Diameter of the connecting PS3

**More benefits**

- ✓ The design complies with the standard dimensions of the VDA guideline
- ✓ Made of PA66-GF30 material, which is resistant to direct contact with coolant and stabilized against heat and hydrolysis effects
- ✓ Made from recyclable material

**NORMAQUICK® Spigot is part of a broad portfolio. Discover more!**



PS3



Fluid Line CWS (Cooling water system)



**Do you have questions or require a personal consultation?**  
 Feel free to contact our Automotive Aftermarket Team! Hotline +44 1635 574 005  
 Visit our website for more information about our Automotive Aftermarket products: [norma-aftermarket.com](http://norma-aftermarket.com)

